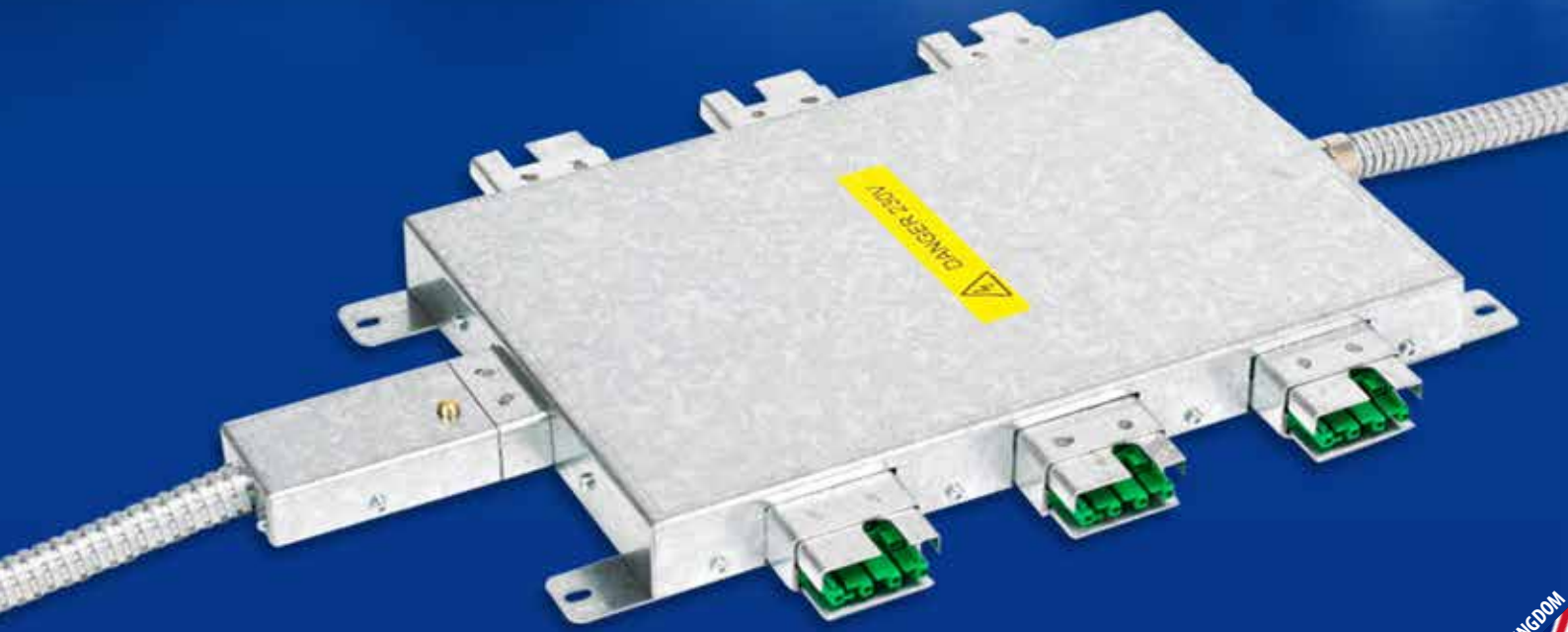


"Connections to Energise Your Ideas"

MWS UNDERFLOOR®



INDEX

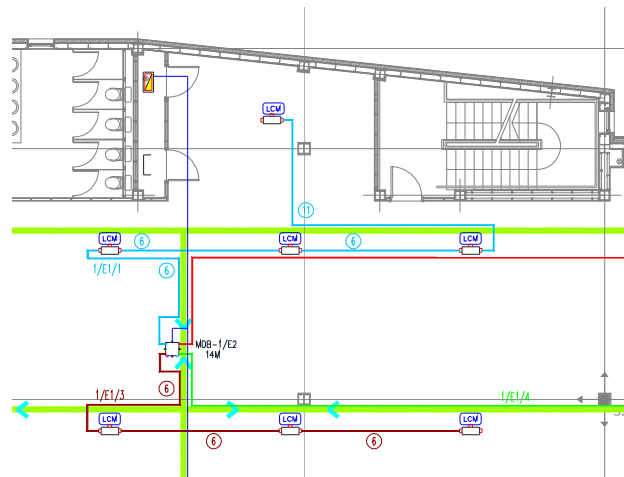
Introduction.....	p. 03
Low Level Armoured System (32A)	p. 04
Floorboxes.....	p. 05
Grommets	p. 06
Technical Information.....	p. 07



INTRODUCTION

Modular Wiring Systems are pleased to offer expert technical assistance with your initial layout design and this is backed up with our Autocad installation layout which is typically provided free of charge for large projects. Our bespoke product service is available should you require anything that is not shown in the catalogues.

Professional Teams are under increasing pressure to complete building projects on time, under budget and with an eye on the environment. All this coupled with a shortage of on-site skilled labour has led to the demand for faster and more efficient construction methods. The concept of pre-fabricating materials off-site has been developed to include the electrical services.



MWS UNDERFLOOR® range of products encompasses the concept fully and reduces installation times dramatically. Using industry standard plug and socket connections to minimise on site wiring, a typical project can reduce installation times by up to 70% compared to more traditional methods.

Our range of MWS UNDERFLOOR®, SYSTEM32® and ARMOURLITE PRODUCTS® are designed to be used for high and low level applications and offers greater flexibility over more rigid systems such as traditional trunking and conduit. Complete pre-wired systems can be supplied which include the distribution board.



LOW LEVEL ARMoured SYSTEM (32A)

MASTER DISTRIBUTION BOX

The MDB is supplied as an (upto) 8 way unit for all underfloor Power applications. This allows for up to 8 circuits to be fed from one MDB.

Each MDB is supplied pre-wired with up to 33 cores of 6491B cables protected by the armoured outer sheath.

Used with single circuit Slave PDU's.



MASTER POWER DISTRIBUTION UNIT

Supplied as a single 32A circuit system for quick and easy distribution for underfloor power applications.

Can be supplied complete with a single circuit home run containing suitably sized 6491B cables, or as a stand alone unit with 'pluggable' home run starter cable.



SLAVE POWER DISTRIBUTION UNIT

Supplied as a single 32A circuit system for quick and easy extension to either the Power MDB or the Master PDU units above.

Supplied with a female starter cable assembly fitted to the unit which simply plugs into the Master PDU or Power MDB. The length of the conduit is pre-determined at tender stage. All wiring is in 6491B cables.



EXTENDER LEAD

Supplied as a 32A Male to Female plug assembly, the Extender lead connects PDU's on the same circuit together.

Each Extender is typically manufactured with 3 core 4mm² 6491B cables protected by our armoured outer sheath and is available in 2m, 3m, 4m and 5m lengths. Other lengths available upon request.



POWER TAP OFF ASSEMBLY

Supplied as a 32A Male plug to free end, the Power Tap Off is usually fitted to Floorboxes, Desk Power Modules, Cleaners Sockets or Wall Sockets.

Each Tap Off is typically supplied with 3 core 4mm² 6491B cables and is available in 3m, 5m and 7m lengths. Other lengths available upon request.



SHALLOW UNDERFLOOR POWER SYSTEM

In restricted floor voids, our shallow 32A underfloor system is of great benefit. The Tap Off plugs into the side of a unit and has meant the overall height of our single circuit system is only 32mm (Floor void space).





FLOORBOXES

TYPICAL FLOORBOX

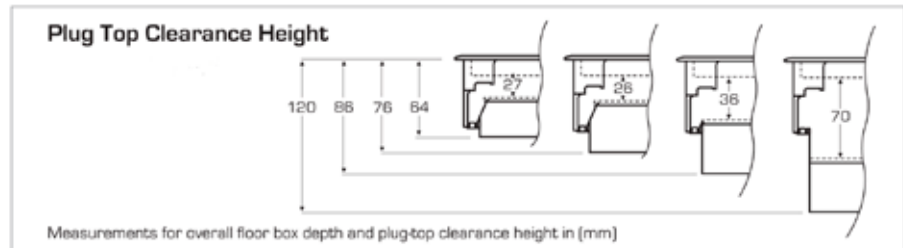
Specifications

- Floor box manufactured from galvanised steel
- 25 & 20mm knockouts to accept flexible conduit
- Frame & lid moulded from high impact polycarbonate
- Galvanised lid insert for strength
- Easy grip recessed lifting handle
- Clamp fixing for fast installation
- Large range of accessory plates
- Special plates available to order
- Standard depth 86mm . Other depths available



Dimensions

- Floor Cut Out: 303 x 221mm
- Floor Box Depth: 86mm
- Plug Top Clearance: 36mm
- Overall Frame & Lid: 313 x 230mm
- Frame Lid Recess: 6mm
- Accessory Plates:
185 x 89mm (3 Comp)
185 x 68mm (4 Comp)



OTHER AVAILABLE FLOORBOXES

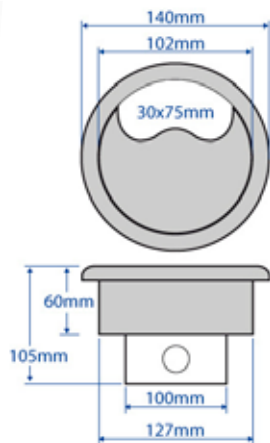
1 COMP FLOORBOX



WATERPROOF FLOORBOX



GROMMETS

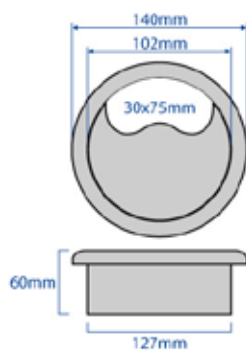
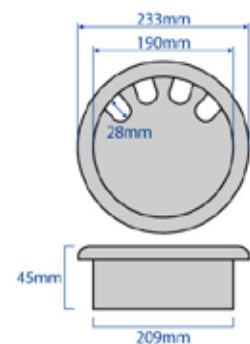
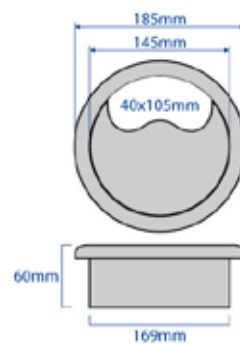
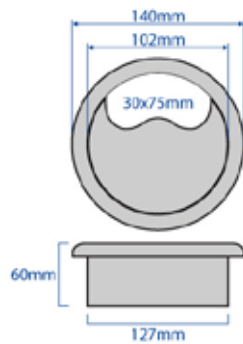


13A POWER GROMMET

Specifications

- Galvanised steel backbox
- Also available with 5 amp and non standard power socket
- Fixing clamps
- 13 Amp Socket
- 20mm knockouts

ACCESS GROMMET (with Clamp)



STAINLESS STEEL ACCESS GROMMET

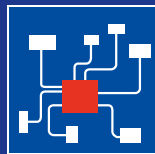
Specifications

- Stainless steel Lid (earthed)
- Fixing clamps



TECHNICAL INFORMATION

- **Cables :** Single Core : 6491B (BASEC Approved BS7211)
- **Armour :** Aluminium interlocked armour sheath
- **Housings :** Galvanised Steel To BS EN 10142:2000
- **Connectors :** Polyimide 6.6 UL94-V0 Halogen Free
- **Voltage Rating :** For any number of poles : 400V / 6kV / 3.IEC60664
- **Current Rating :** MWS UNDERFLOOR® Systems : Upto 32A
The above current ratings are based upon using the following conductor cross sections as a minimum :
 - 32A : 4mm²
 - 25A : 4mm²
 - 20A : 2.5mm²
 - 16A : 1.5mm²
- **Through Resistance :** Systems Rated At 20A To 32A : Approx 0.5mD between male and female contacts
- **Systems Rated At 16A :** Approx 0.8mΩ between male and female contacts
- **Approval :** DIN VDE 0628, DNV, UL (CCA procedure for Europe)
- **Under Preparation :** DIN VDE 0627, EN/IEC 61535, LR, GL
- **Protection Class :** IP20
- **Plugging Cycles :** 200 Cycles Without Load, 100 Cycles With Resistive Load
- **Insertion Force :** Approx 20—40N
- **Retention Force :** >120N With Locking Device
- **Mismating Protection :** 100% Protected Against Mismating Connectors Having Different Number Of Poles
180° Mismating, Staggered Mismating & Mating Of Single Pole Connectors
- **Continuous Temp :** Cable ≥ J 70°, Insulating Components ≥ 105°
- **General Notes :** Protection Against Shock Generally Guaranteed, Even When Disconnected.
Preceeding Ground (Earth) Contacts. Insertion And Withdrawal Is Possible Under Load In Accordance With DIN VDE0628



MODULAR WIRING SYSTEMS

Park Road - Holmewood Industrial Park
Holmewood - Chesterfield - S42 5UW
United Kingdom
tel: +44 (0)845 413 9777
fax: +44 (0)124 685 8001
e-mail: info@modwire.com